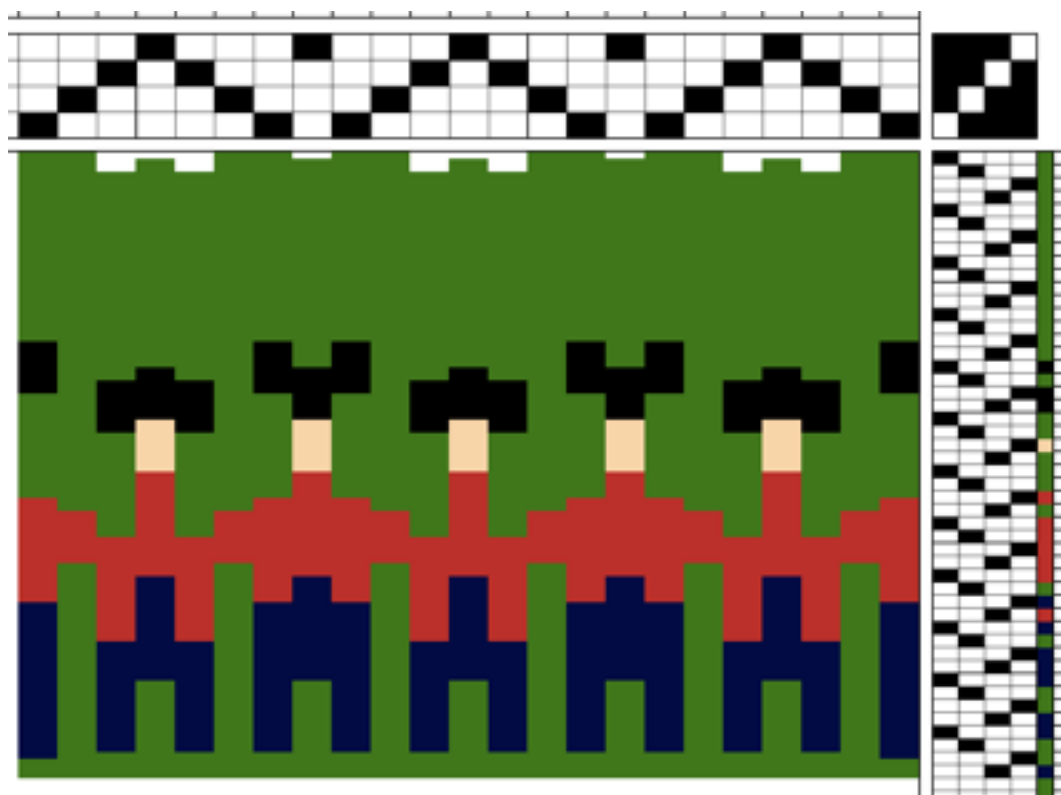


Boundweave-Pastors in a Row

Notes from Jane S. Flanagan, November 2017



The warp is set at 4-5 ends per inch.

Note-the order of the lifts/treading is 1,2,4,3. If you treadle in the sequence 1,2,3,4 you still get figures/motifs, but the central point shifts! This is because the actual structure of the fabric is changed!

The image above does not show the number of repeats of each colour sequence required to weave square in a weft-faced weave-this must be decided by the weaver, in accordance with their yarns. (In practice I have found that 3 repeats of the 4 pick sequence have woven to “square”) Yes, the figures look distorted in the picture, because it is hard to represent the weft-faced weave whilst still being able to see the lift plan and colour sequence. For other figures, the weaver simply works out where to place the appropriate weft colours.

Selvages-I have found I get the neatest selvages if I use a method in which only the weft that should naturally show at that point (i.e. pick 1) goes around the selvedge warp-others are allowed to pass round the back without catching the selvedge-this is my personal preference as I do not like a bulky selvedge. Other methods are available!

However! Beware the curl!!! This unbalanced 3/1 twill structure means the fabric really wants to curl when off the loom, despite any amount of steaming and pressing. Some say it helps to weave in a different sequence, but this in turn affects the motifs unless you change the placement of colours in line with the change in sequence.

Materials. The warp is a strong smooth cotton of around equivalent count of what we call a 4/4 count or roughly equivalent to 2 strands of 12/6 Seine twine. The weft we have used is what is available here as 2 ply 80% wool and 20% nylon carpet/rug yarn, widely used in commercial carpet making, and the exact count is never actually given! Some have used Berber type weft yarn.

The weft yarn (rug wool) is about 14 wraps per inch and the 4/4 cotton warp is 16-18 wraps per inch. Of course, this is only a guide. As it is a totally weft faced structure I have found a warp sett of 4 ends per inch is good, but those who only have a 10 dpi reed have successfully managed 5 ends per inch. But a kitchen fork is useful! As is only beating after several picks.

The number of weft picks per inch can be 45 or more! What is more important than the exact count of picks per inch is for there to be enough space between the warps for the weft to beat well down-bubbling the weft in several places helps to ensure even coverage. So a bit of experimentation may be required.